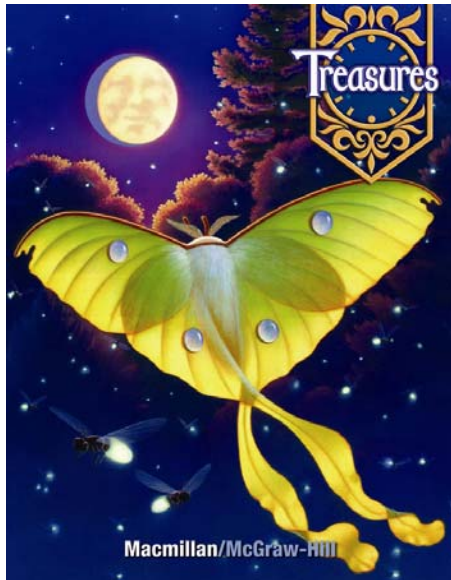




Macmillan/McGraw-Hill

CMT Correlation



# Treasures

Grade 5

© 2009

STANDARDS	PAGE REFERENCES
<b>READING</b> Students comprehend and respond in literal, critical and evaluative ways to various texts that are read, viewed and heard.	
<b>CMT Reading Comprehension</b>	
<b>A4</b> Use information from the text to make predictions based on what is read.	<b>Teacher's Edition:</b> Unit 1 DC 24, 29, 62, 97, 121, 125 Unit 2 DC 213 Unit 3 DC 340, 343, 367, 375 Unit 4 DC 399, 429, 492, 495, 499 Unit 5 DC 557, 618 Unit 6 DC 649, 652, 655, 684, 688, 748
<b>A5</b> Use context clues to determine meanings of unknown or multiple-meaning words or figurative language.	<b>Student Edition:</b> Unit 1 18, 92 <b>Teacher's Edition:</b> Unit 1 ELL 24; T6, T9; WS 47C, 90I Unit 2 DC 243; T5; V 194 Unit 3 IT 385 Unit 4 T6; V 423, 450 Unit 5 T9; V 581 Unit 6 T7; V 701

STANDARDS	PAGE REFERENCES
<b>CMT Reading Comprehension</b>	
<p><b>A1</b> Determine the main idea (nonfiction) theme (fiction) the text.</p>	<p><b>Student Edition:</b>            Unit 2 174, 187, 196, 199            Unit 5 546, 573</p> <p><b>Teacher’s Edition:</b>            Unit 2 DC 176, 177, 182, 198; ES 181; T2            Unit 3 C 274            Unit 5 C 556; T2</p>
<p><b>A2</b> Identify or infer important characters, problems, settings, events, relationships and details.</p>	<p><b>Student Edition:</b>            Unit 1 20, 41, 52, 71, 148            Unit 2 208, 221            Unit 4 396, 413            Unit 5 518, 535</p> <p><b>Teacher’s Edition:</b>            Unit 1 DC 22, 26, 28, 30, 55, 59, 63, 119, 124, 150; ELL 30; ES 31            Unit 2 DC 158, 211, 212, 218, 266, 338, 364; ELL 210, 212; ES 215            Unit 4 C 410; DC 398, 401, 403, 405, 408; ES 403            Unit 5 DC 521, 523, 526, 528, 530; ELL 521            Unit 6 C 659; DC 646, 658</p>
<p><b>A3</b> Select and use relevant information from the text in order to summarize events and/or ideas in the text.</p>	<p><b>Student Edition:</b>            Unit 1 94, 107            Unit 2 163, 221            Unit 3 283, 307            Unit 4 413, 441, 505            Unit 5 535, 599, 608, 627</p> <p><b>Teacher’s Edition:</b>            Unit 1 DC 62, 99, 103, 105; ELL 97; ES 99            Unit 2 DC 155, 176, 178; ELL 178            Unit 3 DC 272, 300, 341; ELL 272            Unit 4 DC 407, 496            Unit 5 DC 558, 592, 612, 614, 617</p>

STANDARDS	PAGE REFERENCES
<p><b>A4</b> Use information from the text to make predictions based on what is read.</p>	<p><b>Teacher’s Edition:</b>            Unit 1 DC 24, 29, 35, 62, 97, 121, 125            Unit 2 DC 213            Unit 3 DC 340, 343, 367, 375            Unit 4 DC 399, 429, 492, 495, 499            Unit 5 DC 557, 618            Unit 6 DC 649, 652, 655, 684, 688, 748</p>
<p><b>B1</b> Identify or infer the author’s use of structure/organizational patterns.</p>	<p><b>Student Edition:</b>            Unit 1 116-133            Unit 3 330-349            Unit 5 570-573  <b>Teacher’s Edition:</b>            Unit 1 DC 120, 122, 125; T3            Unit 3 DC 334, 336, 340; ELL 332, 340; T3            Unit 5 DC 572; T3</p>
<p><b>B2</b> Draw conclusions about the author’s purpose for choosing genres or including or omitting specific details in the text.</p>	<p><b>Student Edition:</b>            Unit 3 264, 283, 360, 383  <b>Teacher’s Edition:</b>            Unit 1 DC 97, 98; IT 44            Unit 2 DC 198, 245, 246; IT 166            Unit 3 DC 267, 273, 277, 278, 333, 337, 338, 342, 345, 346, 365, 371, 372, 375; ELL 363; ES 273            Unit 4 DC 399, 402, 407, 493, 494, 497, 498            Unit 5 DC 586, 589, 595, 619, 622, 624            Unit 6 DC 717, 722, 724; ELL 717</p>
<p><b>B3</b> Use stated or implied evidence from the text to draw and/or support a conclusion.</p>	<p><b>Student Edition:</b>            Unit 3 264, 283, 360, 383  <b>Teacher’s Edition:</b>            Unit 1 DC 97, 98; IT 44            Unit 2 DC 198, 245, 246; IT 166            Unit 3 DC 267, 273, 277, 278, 333, 337, 338, 342, 345, 346, 365, 371, 372, 375; ELL 363; ES 273            Unit 4 DC 399, 402, 407, 493, 494, 497, 498            Unit 5DC 586, 589, 595, 619, 622, 624            Unit 6 DC 717, 722, 724; ELL 717</p>

STANDARDS	PAGE REFERENCES
<p><b>C1</b> Make connections between the text and outside experiences and knowledge.</p>	<p><b>Student Edition:</b>  Unit 1 21-39, 41 #3, #4  Unit 2 232-249, 251 #3, #4  Unit 3 330-347, 349 #3, #4  Unit 4 396-411, 413 #3, #4  Unit 5 583-597, 599 #3, #4  Unit 6 741-751, 753 #3</p> <p><b>Teacher’s Edition:</b>  Unit 1 TC 41 #3, #4  Unit 2 TC 251 #3, #4  Unit 3 TC 349 #3, #4  Unit 4 TC 413 #3, #4  Unit 5 TC 599 #3, #4  Unit 6 TC 753 #3</p>
<p><b>C2</b> Select, synthesize and/or use relevant information within the text to write a personal response to the text.</p>	<p><b>Student Edition:</b>  Unit 1 88-89  Unit 2 202-203  Unit 3 324-325  Unit 4 458-459  Unit 5 576-577  Unit 6 708-709</p> <p><b>Teacher’s Edition:</b>  Unit 1 R 88  Unit 2 R 202  Unit 3 R 324  Unit 4 R 458  Unit 5 R 576  Unit 6 R 708</p>
<p><b>D1</b> Analyze and evaluate the author’s craft including use of literary devices and textual elements.</p>	<p><b>Teacher’s Edition:</b>  Unit 1 AC 40, 70, 106; C 57  Unit 2 AC 162, 220, 250; C 153  Unit 3 AC 282, 306, 348, 382  Unit 4 AC 412, 440, 504  Unit 5 AC 534, 560, 598, 626  Unit 6 AC 660, 690, 730</p>

STANDARDS	PAGE REFERENCES
<p><b>D2</b> Select, synthesize and/or use relevant information within the texts to extend or evaluate the texts.</p>	<p><b>Student Edition:</b>  Unit 1 41, 71, 107  Unit 2 163, 221, 251  Unit 3 283, 307, 349, 383  Unit 4 413, 441, 505  Unit 5 535, 561, 599, 627  Unit 6 661, 691, 731</p> <p><b>Teacher's Edition:</b>  Unit 1 DC 34, 100, 102  Unit 2 DC 151, 181, 217  Unit 3 DC 275, 379  Unit 4 DC 471  Unit 5 DC 590, 615  Unit 6 DC 704, 743</p>
<p><b>D3</b> Demonstrate an awareness of an author's or character's values, customs and beliefs included in the text.</p>	<p><b>Student Edition:</b>  Unit 2 232-249, 250  Unit 3 330-347, 348  Unit 4 396-411, 412  Unit 6 741-751, 752</p> <p><b>Teacher's Edition:</b>  Unit 2 AP 250  Unit 3 AP 348  Unit 4 AP 412  Unit 5 T4  Unit 6 AP 752</p>